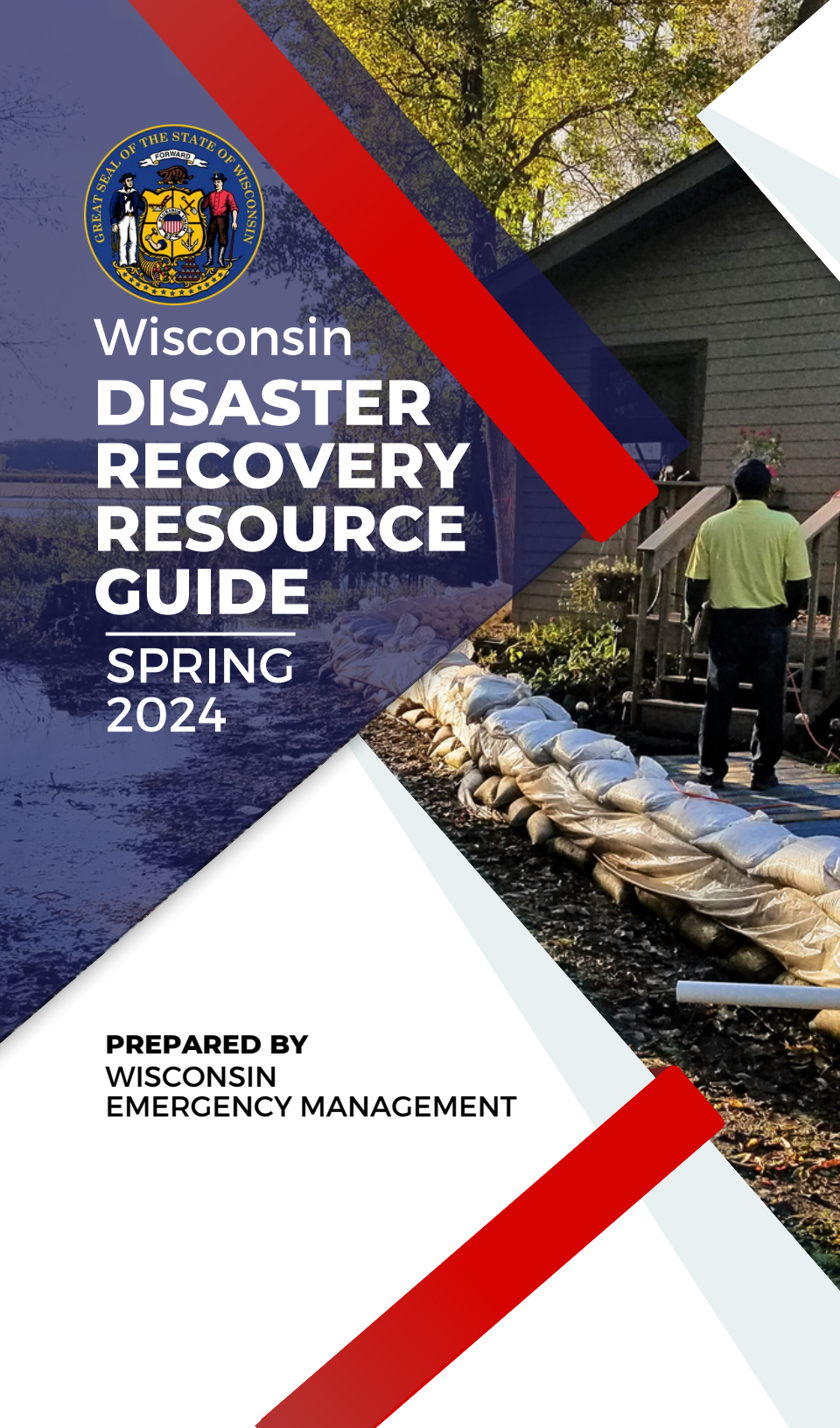




# Wisconsin **DISASTER RECOVERY RESOURCE GUIDE**

**SPRING  
2024**

**PREPARED BY  
WISCONSIN  
EMERGENCY MANAGEMENT**





# CONTENTS



---

**01**  
OVERVIEW

---

**02**  
PUBLIC INFRASTRUCTURE

---

**04**  
HOUSING

---

**06**  
ECONOMIC DEVELOPMENT

---

**07**  
AGRICULTURE

---

**09**  
MITIGATION

---

**11**  
MULTIPLE CATEGORY PROGRAMS



# OVERVIEW

Disasters can occur at any time in Wisconsin, resulting in lives lost, injuries, and millions in property damage.

Recovery is a complex process and engagement at the local and county level is critical.

The Disaster Recovery Resource Guide contains information about programs to assist tribes, municipalities, and counties during the recovery process.

This guide was created by and is maintained by the Wisconsin Recovery Task Force (WRTF). The task force is comprised of state agencies and stakeholders that have a role in recovery efforts.

This guide will be revised and updated as new information and opportunities become available.

It does not include all resources that may be available; please check with local businesses and volunteer organizations for additional assistance. Nonprofit and volunteer organizations are critical to recovery efforts.

Please note that the availability of these programs may or may not require a federal declaration.





# PUBLIC INFRASTRUCTURE



## **WISCONSIN DISASTER FUND (WDF)**

Administered by: Wisconsin Department of Military Affairs (DMA)  
Division of Wisconsin Emergency Management (WEM)

The WDF program is a state-funded reimbursement program that allows local governmental units to recoup costs that do not meet thresholds for federal assistance programs. It covers the removal of debris, emergency protective measures, and repairs to roads and bridges damaged by the incident.

**More Information:** <https://wem.wi.gov/recovery/wisconsin-disaster-fund-wdf/>

**Contact:**

Kelsey Brown  
Wisconsin Disaster Fund Coordinator  
[widisasterfund@widma.gov](mailto:widisasterfund@widma.gov)  
(608) 242-3239



## **DISASTER DAMAGE AIDS (DDA)**

**Administered by:** Wisconsin Department of Transportation (WisDOT)

The DDA program provides financial assistance to local governments to repair any highway that has had significant damage due to a disaster event.

**More Information:**

<https://wisconsin.gov/Pages/doing-bus/local-gov/astnce-pgms/highway/disaster.aspx>

**Contact:**

John Moe  
Program Manager  
[johnx.moe@dot.wi.gov](mailto:johnx.moe@dot.wi.gov)  
(608) 267-0404

## **EMERGENCY RELIEF (ER)**

**Administered by:** Wisconsin Department of Transportation (WisDOT)

The ER program assists local governments with replacing or repairing roadways or roadway structure damage on ALL federal-aid highways (major collectors and above) resulting from a catastrophic failure or natural disaster. ER also includes debris removal and emergency protective measures such as traffic control and detour signing.

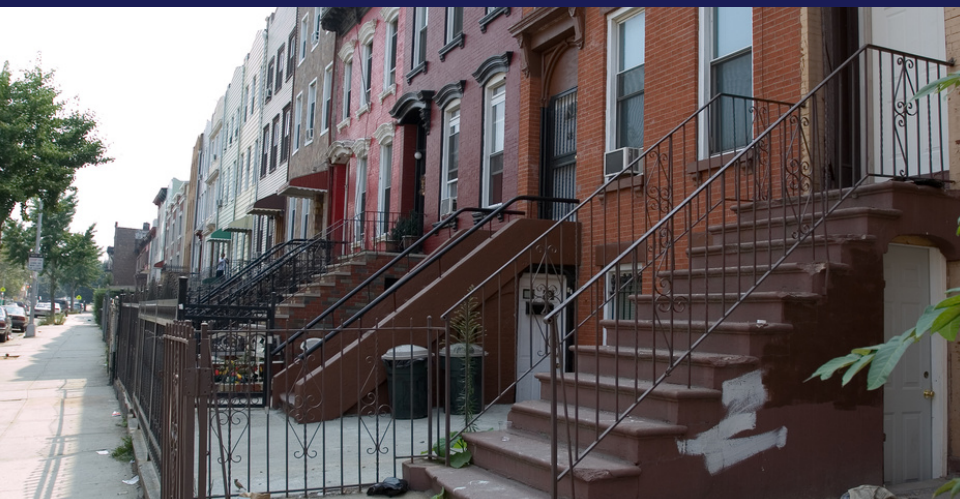
**More Information:**

<https://wisconsin.gov/Pages/doing-bus/local-gov/astnce-pgms/highway/relief.aspx>

**Contact:**

Dan Schultz  
Program Manager  
[dan.schultz@dot.wi.gov](mailto:dan.schultz@dot.wi.gov)  
(414) 227-2150

# HOUSING



## AFFORDABLE HOUSING PROGRAMS

**Administered by: Wisconsin Department of Administration (DOA)  
Division of Energy, Housing and Community Resources (DEHCR)**

Affordable Housing Programs fund home purchase and rehabilitation; single-family and multifamily development. Programs benefit low- to moderate-income individuals and families. Programs and contact information can be found online.

**More Information:**

<https://energyandhousing.wi.gov/Pages/Housing.aspx#affordable>





## **SUPPORTIVE HOUSING PROGRAMS**

**Administered by:** Wisconsin Department of Administration (DOA) Division of Energy, Housing and Community Resources (DEHCR)

Supportive Housing Programs fund homeless and special needs programs. Various programs and contact information for each program can be found online.

**More Information:**

<https://energyandhousing.wi.gov/Pages/Housing.aspx#supportive>

## **HOME HOMEBUYER AND REHABILITATION PROGRAM (HHR)**

**Administered by:** Wisconsin Department of Administration (DOA) Division of Energy, Housing and Community Resources (DEHCR)

On a competitive basis, awards funding for units of local government and local housing organizations to provide essential home purchase assistance and necessary home rehabilitation, and other vital improvements for single-family housing units occupied by low and moderate-income households.

**More Information:**

<https://energyandhousing.wi.gov/Pages/AgencyResources/hhr.aspx>

**Contact:**

HHR Program Manager

[DOADOHHHRHCRI@wisconsin.gov](mailto:DOADOHHHRHCRI@wisconsin.gov)

# ECONOMIC DEVELOPMENT



## WEDC CONTINUOUS ECONOMIC CAPABILITY/CAPACITY RESPONSE

Administered by: Wisconsin Economic Development Corporation (WEDC)

WEDC, as a quasi-governmental agency, has the capability and flexibility and agility to stand up programs to address needs of Local Governments, Tribes, RPCs, REDOS, EDOs, NGOs and Businesses during an incident and/or through incident recovery.

**More Information:** [https://wedc.org/programs/?fwp\\_programsresources\\_category=business-development](https://wedc.org/programs/?fwp_programsresources_category=business-development)

**Contact for Regional Economic Directors can be found online:** <https://wedc.org/inside-wedc/contact-us/#regional>



# AGRICULTURE

## **FLOOD/PREVENTED PLANTING RESOURCES**

**Administered by:** Department of Agriculture, Trade and Consumer Protection (DATCP)

Guides and programs related to reporting agricultural damages, food safety, home repairs, flooded farmlands, pets and livestock, and other farm aid resources. Programs and guides address pre- and post-disaster.

**More Information:**

[https://datcp.wi.gov/Pages/Programs\\_Services/Floods.aspx](https://datcp.wi.gov/Pages/Programs_Services/Floods.aspx)



## **AGRICULTURE DAMAGE REPORTING**

**Administered by: UW-Extension**

Teach, learn, lead, and serve, connecting people with the University of Wisconsin, and engaging with them in transforming lives and communities.

**More Information:**

<https://counties.extension.wisc.edu/>

## **CONSERVATION RESERVE ENHANCEMENT PROGRAM (CREP)**

**Administered by: Department of Agriculture, Trade and Consumer Protection (DATCP)**

CREP pays landowners to install filter strips along waterways or to return continually flooded fields to wetlands while leaving the remainder of the adjacent land in agricultural production.

**More Information:**

[https://datcp.wi.gov/Pages/Programs\\_Service\\_s/CREP.aspx](https://datcp.wi.gov/Pages/Programs_Service_s/CREP.aspx)





# MITIGATION

## **BUILDING RESILIENT INFRASTRUCTURE AND COMMUNITIES (BRIC)**

Administered by: Wisconsin Department of Military Affairs (DMA) Division of Wisconsin Emergency Management (WEM)

The BRIC program's guiding principles are supporting communities through capability- and capacity-building; encouraging and enabling innovation; promoting partnerships; enabling large projects; maintaining flexibility; and providing consistency. Capability- and capacity-building (C&CB) activities enhance the knowledge, skills, expertise, etc., of the current workforce to expand or improve the administration of mitigation assistance.

**More Information:** <https://wem.wi.gov/mitigation-grant-opportunities/>

**Contact:**

Chad Atkinson  
Mitigation Section Supervisor  
[chad.atkinson@widma.gov](mailto:chad.atkinson@widma.gov)  
(608) 888-5292

## HAZARD MITIGATION GRANT PROGRAM (HMGP)

Administered by: Wisconsin Department of Military Affairs (DMA) Division of Wisconsin Emergency Management (WEM)

Implements long-term, cost-effective mitigation actions to eliminate/reduce risk to life and property after a federal disaster declaration. The amount of funding made available is a percentage of total disaster costs and, therefore, will vary with each disaster. A project does not have to be in a declared county to be eligible.

### More Information:

<https://wem.wi.gov/mitigation-grant-opportunities/>

### Contact:

Chad Atkinson  
Mitigation Section Supervisor  
[chad.atkinson@widma.gov](mailto:chad.atkinson@widma.gov)  
(608) 888-5292







# MULTIPLE CATEGORY PROGRAMS

## STATE TRUST FUND LOAN PROGRAM

Administered by: Board of Commissioners of Public Lands (BCPL)

This program provides loans to municipalities and school districts for the following:

- Local infrastructure
- Capital equipment, and vehicles including fire trucks and public safety vehicles
- Building repairs and improvements
- Refinancing existing liabilities to reduce future borrowing costs
- Economic development
- Acquisition and development of property for local businesses
- Environmental remediation
- Settlement of property taxes with your other local taxing entities

### More Information:

<https://bcpl.wisconsin.gov/Pages/LoanProgramHomePage.aspx>

### Contact:

Richard Sneider  
BCPLrichard.sneider@wi.gov  
(608) 261-8001

## FLOOD TOOL KIT

Administered by: Wisconsin Department of Health Services (DHS)

A planning guide for health and emergency response officials and citizens to assist in preparing for and responding to flood events.

**More Information:**

<https://www.dhs.wisconsin.gov/flood/index.htm>

## MANAGING DEBRIS AND WASTE

Administered by: Wisconsin Department of Natural Resources (DNR)

Information on how and where to safely dispose of disaster generated debris.

**More Information:**

<https://dnr.wisconsin.gov/topic/Waste/StormDebris.html>

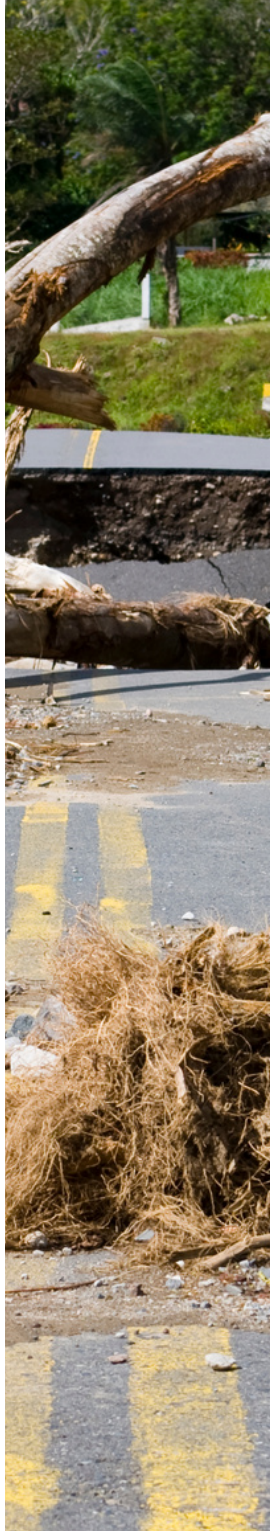
**Contact:**

Casey Krausensky

NR Program Coordinator

[casey.krausensky@wisconsin.gov](mailto:casey.krausensky@wisconsin.gov)

(608) 577-3643



## **STORM DEBRIS CLEANUP ON WATERWAYS**

**Administered by: Wisconsin Department of Natural Resources (DNR)**

Information specific to DNR Waterways Program regulations designed to help answer questions regarding cleaning up debris in lakes, rivers, streams, and wetlands.

### **More Information:**

<https://dnr.wisconsin.gov/topic/Waterways/stormDebrisCleanup.html>

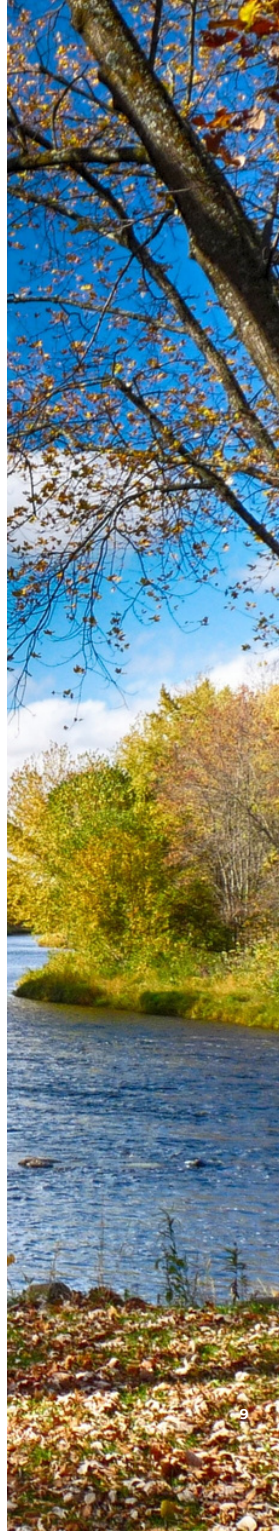
## **MULTIPLE GRANT AND LOAN PROGRAMS**

**Administered by: Wisconsin Department of Natural Resources (DNR)**

The DNR administers a wide variety of state and federal grant and zero- to low- interest loan programs for projects ranging from land stewardship and recreation to non-point pollution, sewage, and water systems; municipal flood control; and dam repair or removal.

### **More Information:**

<https://dnr.wi.gov/Aid/Grants.html>





## COMMUNITY DEVELOPMENT BLOCK GRANT - EMERGENCY ASSISTANCE PROGRAM

Administered by: Department of Administration  
(DOA) Division of Energy, Housing and  
Community Resources (DEHCR)

Grants for individual housing, public  
infrastructure, public facilities, and business  
assistance needed because of natural,  
technological, or human-caused disasters.

### More Information:

<https://energyandhousing.wi.gov/Pages/AgencyResources/CDBG-EAP.aspx>

### Contact:

EAP Program Coordinator  
[doacdbg@wisconsin.gov](mailto:doacdbg@wisconsin.gov)  
(608) 266-7531



## MULTIPLE PROGRAMS

**Administered by:** Mississippi River Regional Planning Commission (MRRPC)

The MRRPC provides planning and economic development services to improve the region's environment, economy, and way of life. The MRRPC administers several funding sources and provides technical assistance. They cover Buffalo, Crawford, Jackson, La Crosse, Monroe, Pepin, Pierce, Trempealeau, and Vernon counties.

**More Information:** <https://mrrpc.com/loans-grants/>

**Contact:**

[plan@mrrpc.com](mailto:plan@mrrpc.com)  
(608) 785-9396

## MULTIPLE PROGRAMS

**Administered by:** Southwestern Wisconsin Regional Planning Commission (SWWRPC)

The SWWRPC provides planning and economic development services to improve the region's environment, economy, and way of life. The SWWRPC administers several funding sources and provides technical assistance. They cover Grant, Green, Iowa, Lafayette, and Richland counties.

**More Information:**

<https://www.swwrpc.org/services/>

**Contact:**

[info@swwrpc.org](mailto:info@swwrpc.org)  
(608) 342-1636



## ENERGY INNOVATION GRANT PROGRAM

**Administered by: Wisconsin Public Service Commission (PSC)**

This program supports energy reliability by providing resources, facilities, and alternatives to meet the needs of present and future utility customers.

**More Information:**

<https://psc.wi.gov/Pages/Programs/OEI/EnergyInnovationGrantProgram.aspx>

**Contact:**

[oei@wisconsin.gov](mailto:oei@wisconsin.gov)

## HISTORIC PRESERVATION

**Administered by: Wisconsin Historical Society (WHS)**

The WHS is the federally designated State Historic Preservation Office (SHPO) for the state of Wisconsin. It maintains the historic preservation database and provides a listing of funding sources that can be further refined by county. They also provide information to help prevent and mitigate flooding damages to historical buildings and other cultural resources.

**More Information:**

[https://wisconsinhistory.org/Records/Search?nodes=\\*Funding\\*](https://wisconsinhistory.org/Records/Search?nodes=*Funding*)



## DISASTER LOANS

### Administered by: Small Business Administration (SBA)

Provides low-interest disaster loans to businesses of all sizes, private non-profit organizations, renters, and homeowners. Eligible costs must not be covered by personal insurance or FEMA and include repair or replacement of real estate, personal property, machinery & equipment, inventory, and business assets that have been damaged or destroyed along with economic losses.

### More Information:

<https://www.sba.gov/funding-programs/disaster-assistance>

### Contact:

Robby Stoikes  
Recovery Planning and Support Supervisor  
[robert.stoikes@widma.gov](mailto:robert.stoikes@widma.gov)  
(608) 242-3226





## REFUGEE SUPPORT SERVICES PROGRAM

**Administered by: Wisconsin Department of Children and Families (DCF)**

This program connects refugees with an array of services that include cash assistance, grants, employment opportunities, medical assistance, health programs, school assistance, and other services that are designed to support refugees.

### **More Information:**

<https://dcf.wisconsin.gov/refugee>

### **Contact:**

[dcfrefugee@wisconsin.gov](mailto:dcfrefugee@wisconsin.gov)

(412) 270-4775



## WISCONSIN RECOVERY TASK FORCE (WRTF)

Administered by: Wisconsin Department of Military Affairs (DMA) Division of Wisconsin Emergency Management (WEM)

The State of Wisconsin created the Wisconsin Recovery Task Force (WRTF) to coordinate state efforts in recovery regarding mitigation, agriculture, economic, housing, infrastructure, and health and social services.

The mission of the WRTF is to assist individuals, businesses, and communities in recovering from disasters quickly, safely, and with increased resilience.

### More Information:

<https://wem.wi.gov/recovery/long-term-recovery/>

### Contact:

Sam Liebl  
Recovery Planner  
[samantha.liebl@widma.gov](mailto:samantha.liebl@widma.gov)  
(608) 316-5374









For more information on disaster recovery

✉ [samantha.liebl@widma.gov](mailto:samantha.liebl@widma.gov)

🌐 [wem.wi.gov](http://wem.wi.gov)

