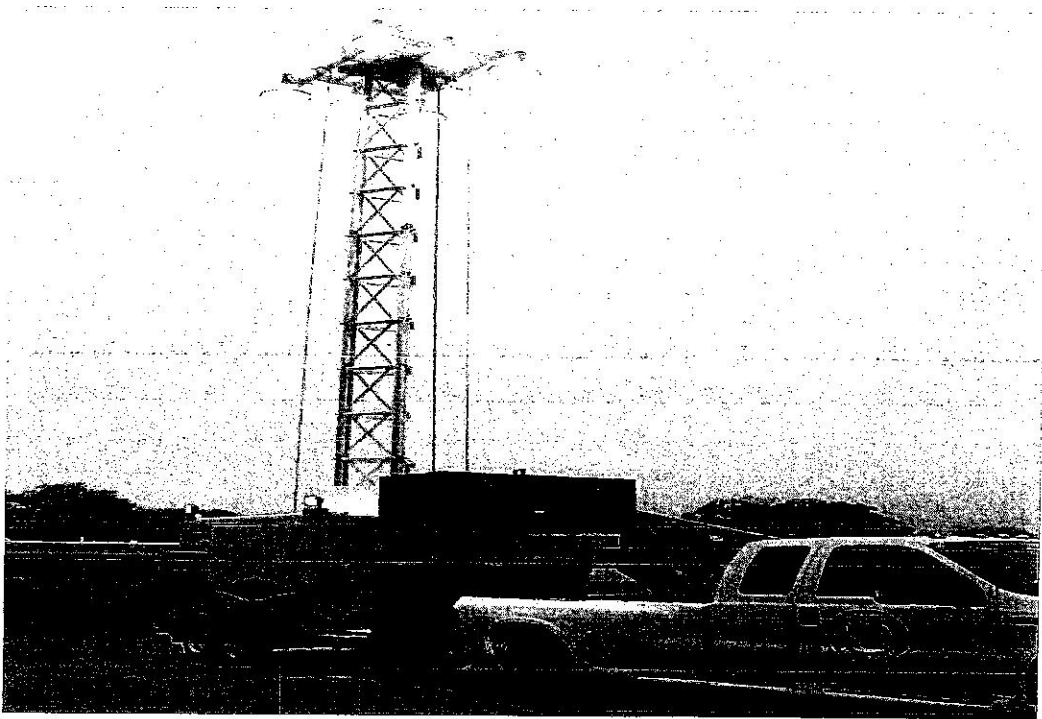
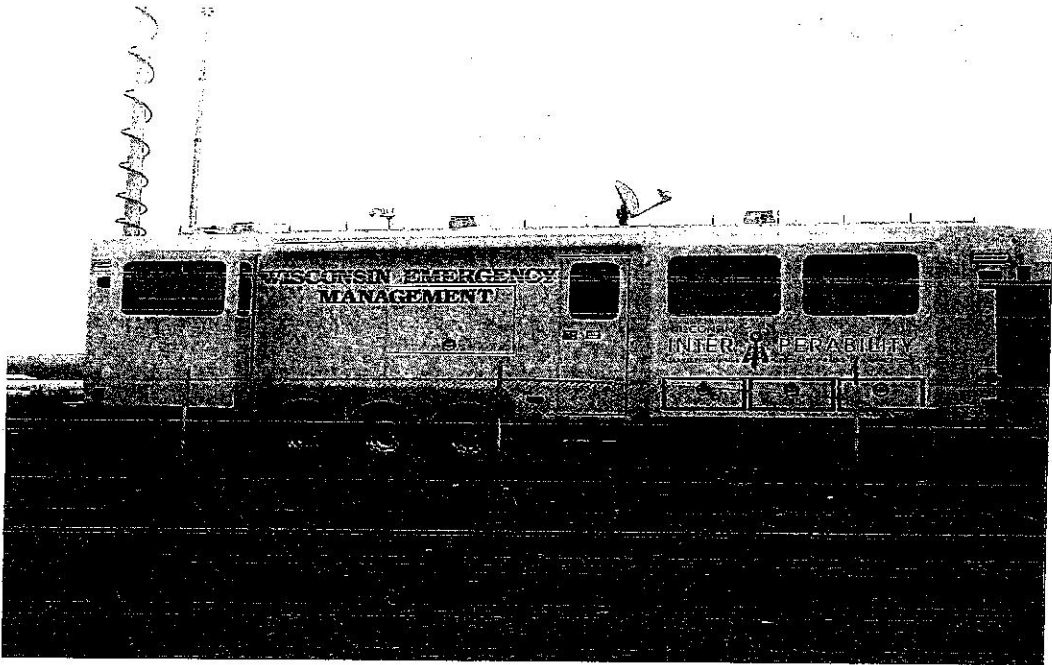


Wisconsin Emergency Management Emergency Police Services (EPS)



FAQ's Regarding Emergency Police Services (EPS)

What is EPS? EPS is a controlled state-wide mutual aid response of resources at the request of a law enforcement agency in need.

What resources does EPS provide? EPS most often will be the coordinator of personnel from within your EPS Region or the state who respond at the direction of the EPS Director/Deputy Director, or EPS Regional Coordinator. EPS also has organic equipment to include mobile light tower, mobile command posts, mobile repeaters, and radio caches for UHF/VHF/8000 MHz.

Who is all a part of the EPS Program? Every Sheriff and Police Chief is the EPS Coordinator for their agency. EPS has great reach to every law enforcement agency within the state. Every local, county, and state agency that employs law enforcement personnel are part of the EPS resource pool. As part of an EPS request, state agencies can also be requested to provide resources, to include UW Police, WSP, Capitol Police, DOJ, and DNR.

When will I need EPS support? EPS can be used for a major catastrophic event or even a pre-planned event. Once you identified a shortfall in staff or equipment or exhausted your agencies local mutual aid, your next step is EPS. It is imperative to ensure during any immediate event you forecast out 24/48/72 hours to identify resource requirements timely and make the request for additional resources early to facilitate activation and travel.

How big must my event be for an EPS request? Previous EPS activations have ranged from a response of five law enforcement officers up to 100's. EPS is there for you when you need more than you have.

How do I request EPS support? In the case of an emergency (major disaster, civil unrest), the County Sheriff of the affected county would contact his/her EPS Regional Coordinator and request EPS support. Should the affected agency be a police department, the Police Chief would request EPS support through the County Sheriff. The County Emergency Manager, in coordination with the Sheriff can also request EPS support through the WEM SEOC and WEM SDO who in turn contact the EPS Deputy Director.

In the case of a pre-planned event (Farm Tech Days, PGA Tour, NASCAR Race, Community Events), the County Sheriff would request EPS support (Personnel/equipment) as soon as they identify a need. The request is made from Sheriff to EPS Deputy Director or County EM to WEM Regional Director. It is important to identify the support needed early so EPS staff can be integrated into the planning process.

What information must I provide when I request EPS resources? To ensure a prompt response with the appropriate resources it is necessary to provide the important information. This includes the number of people you want, what they will be doing, where they report (staging area), what radio frequency they should use, any special equipment needs, and duration of the response. The same applies if it is equipment you need, ATV's, Armored vehicle, K9's.

What else do I need to do as a requesting agency? EPS is a standard mutual aid request. When you have been told what agencies will be responding, it is imperative your agency sends a TTY to the supporting agency providing a hard copy mutual aid request.

What do I need to know and do as an agency providing resources under an EPS request? As with any mutual aid, your staff will fall under the control and direction of the requesting agency. Your department should keep records regarding costs (personnel and equipment) in case the event leads to some form of financial reimbursement.

What is my liability as a requesting agency or agency providing resources? Per state statutes, all mutual aid resources are covered by the requesting agency.

Who pays for the personnel and equipment provided by the EPS Program? As with any other event requiring a mutual aid response, the liability falls onto the requesting agency but the cost associated with the response lays with you the resource provider. This may change if the event gains a disaster declaration and may generate financial reimbursement.

What if I need federal resources? The EPS Deputy Director also serves as a liaison to state (WSP, DNR, UW Police, Cap Police, and DOJ) and federal law enforcement agencies (FBI, ICE, USMS).

Are there any fees associated with the use EPS equipment? No, all equipment and personnel associated with delivery, setup, and operation of the equipment is at "no charge" to the requesting agency.

What is the ALERT (Aligned Law Enforcement Response Teams) Program? ALERT consists for eight (8) Tactical Teams and five (5) EOD Teams, regionally based but through MOU agree to respond on a regional basis. The ALERT Teams are aligned upon the EPS Regions. Requests for an ALERT response must be made through the EPS Program similar to any other request for resources.

ALERT Tactical Teams

Dane Co Sheriff
~~Douglas Co Sheriff~~ / Superior PD
Eau Claire Co Sheriff
Green Bay PD / Brown Co Sheriff
La Crosse Co Sheriff / La Crosse PD
Milwaukee County Sheriff/City of Milwaukee PD
Oneida Co Sheriff
Winnebago Co Sheriff

EOD Teams

Kenosha County Sheriff
Dane County Sheriff
Milwaukee County Sheriff
Brown County Sheriff
Marathon County/Oneida County
Sheriff's

I have a tactical team so why request an ALERT Team? ALERT Teams are enhanced with Homeland Security grant dollars and receive top-notch training and the best and latest equipment. Their mission is to support the local Incident Commander and not to take over any event.

I still have questions regarding EPS and the ALERT Program, who do I call? The EPS Deputy Director is Todd Nehls. As EPS Deputy Director Todd will travel to anywhere within the state and train/inform your local agencies/staff regarding the EPS Program. Todd can be reached at 608-444-0003 or todd.nehls@wisconsin.gov.