



Agriculture and Natural Resources

ESF 11



Intentionally left blank



Table of Contents

1. Introduction	5
1.1. Purpose.....	5
1.2. Scope.....	5
1.3. Policies.....	6
2. Concept of Operations	7
2.1. Mobilization Triggers.....	7
2.2. Organization.....	8
2.3. ESF Activities.....	9
3. Agency Responsibilities	11
3.1. Lead Agency – Department of Agriculture, Trade & Consumer Protection.....	11
3.2. Wisconsin Governmental Support Agencies.....	12
3.3. Non-Governmental Support Organizations.....	14
3.4. Federal Government.....	14
4. Supporting Documents	16
4.1. Attachments.....	16
4.2. Memoranda of Understanding.....	16
4.3. Agency-Specific Plans and Procedures.....	16
4.4. Federal Response.....	16

List of Tables

Table 1-1: Coordinating and Support Agencies.....	5
Table 2-1: DATCP Mobilization Triggers.....	7
Table 2-2: Response Activities.....	9
Table 3-1: Lead Coordinating Agency Functions.....	11
Table 3-2: State Government Support Agencies Functions.....	12
Table 3-3: Non-Governmental Support Organizations Functions.....	14
Table 3-4: Federal Government Functions.....	14
Table 4-1: Record of Change.....	17



Intentionally left blank



Table 1-1: Coordinating and Support Agencies

Lead Coordinating Agencies	Department of Agriculture, Trade & Consumer Protection (DATCP)
Wisconsin Governmental Support Agencies	Department of Health Services (WI DHS) Department of Natural Resources (DNR) Department of Public Instruction (DPI) Department of Transportation (WisDOT) University of Wisconsin-Extension (UW-Extension) Department of Military Affairs/Wisconsin Emergency Management (DMA/WEM) Wisconsin Historical Society Department of Military Affairs/Wisconsin National Guard (DMA/WING)
Non-Governmental Support Organizations	American Red Cross Wisconsin Agro-Security Resource Network (WARN) Wisconsin Animal Reserve Corps (WARC)
Federal ESF Coordinating Agencies	U.S. Department of Agriculture (USDA)

1. Introduction

1.1. Purpose

To coordinate state and federal activities in support of local, county, and tribal authorities' response to an incident involving agriculture, food, and natural or cultural resources.

1.2. Scope

- 1.2.1 Control and eradicate or manage foreign animal diseases (including infectious, non-infectious, and zoonotic diseases), exotic plant diseases, and pest infestation.
- 1.2.2 Respond to contamination from agrichemicals and investigate unexplained food-chain animal deaths through an integrated Toxic Response Team.
- 1.2.3 Ensure food safety and work with industry to provide adequate food supplies during an emergency.
- 1.2.4 Provide nutrition assistance.
- 1.2.5 Provide support for ensuring the safety and well-being of household pets and large animals.
- 1.2.6 Protect natural and cultural resources and historic properties (NCH) resources prior to, during, and after a disaster.
- 1.2.7 Provide financial advising, counseling vouchers, and producer mediation and arbitration services.
- 1.2.8 Provide technical assistance and administer grants for soil and water conservation and other engineering practices.



1.3. Policies

1.3.1 The DATCP, in accordance with Chapters 93, 94, 95, and 97 of the Wisconsin Statutes:

1.1.3.1. Has broad authority to:

- (1) Investigate and control animal diseases.
- (2) Investigate and eradicate plant infestations and exotic pest species.
- (3) Ensure the safety of our food supplies through inspections and other activities under DATCP authorities.
- (4) Respond to agrichemical releases.
- (5) Provide assistance to producers on conservation and engineering practices.
- (6) Provide producers with various types of business assistance.

2.1.3.1. May:

- (1) Test animals.
- (2) Impose quarantines on diseased plants and animals.
- (3) Regulate imports and movement of animals and plants.

1.3.2 The DNR, in accordance with Chapters 1, 23, 29, 95, 254, 283, 285, 289, and 291 of the Wisconsin Statutes:

1.1.3.2. Has authority for:

- (1) Natural resources.
- (2) Wildlife that may be affected by a foreign animal disease.
- (3) Environmental regulations for activities conducted as part of ESF 11, including carcass management and incineration.

2.1.3.2. Establishes statewide soil and water conservation standards.

1.3.3 The Wisconsin Historical Society is authorized under §§ 44.24, 44.29, 44.40, and 157.70, Wis. Stats. to:

1.1.3.3. Serve as the principal historic preservation agency of the state.

2.1.3.3. Identify historic and archeological sites.

3.1.3.3. Review state or federal funded, licensed, and permitted activities that affect cultural and historic properties.

4.1.3.3. Protect human burials from disturbance.

1.3.4 The WI DHS in accordance with Chapters 250, 252, and 254 of the Wisconsin Statutes:

1.1.3.4. Has general powers and duties including:



- (1) General supervision throughout the state of the health of citizens.
- (2) Execute what is reasonable and necessary for the prevention and suppression of disease.
- (3) Investigate the cause and circumstances of any special or unusual disease or mortality.

2.1.3.4. For communicable diseases the department may require:

- (1) Isolation of patients.
- (2) Quarantine of contacts.
- (3) Concurrent and terminal disinfection.
- (4) Modified forms of these procedures.

3.1.3.4. The department is the lead state agency for health risk assessment and shall:

- (1) Assess the acute or chronic health effect from occupational or environmental human health hazards.
- (2) State agencies and local health departments shall report known incidents of environmental contamination to the department.

2. Concept of Operations

2.1. Mobilization Triggers

Mobilization triggers are specific actions that initiate DATCP's emergency response procedures.

Table 2-1: DATCP Mobilization Triggers

Division of:	Mobilization Triggers
Animal Health	<ul style="list-style-type: none"> • Rely on information from direct and indirect monitoring programs and on consumer/producer complaints as triggers for response. • Once a division has received individual complaints or results from direct and indirect monitoring that indicate a potentially significant issue, standard chain-of-command operating procedures are followed.
Food and Recreational Safety	
Agriculture Resource Management	
Trade and Consumer Protection	<ul style="list-style-type: none"> • Provide secondary response services in support of other DATCP divisions.
Management Services	
Agricultural Development	

The following list identifies which DATCP divisions mobilize for each response:

2.1.1 Foreign animal and plant diseases and pest infestation:

1.2.1.1. Division of Animal Health (DAH)

2.2.1.1. Division of Agriculture Resource Management (DARM)

3.2.1.1. Division of Food and Recreational Safety (DFRS)



- 2.1.2 Agrichemical release and unexplained food chain deaths:
 - 1.2.1.2. DARM
 - 2.2.1.2. DAH
- 2.1.3 Commercial food supply safety:
 - 1.2.1.3. DFRS
 - 2.2.1.3. DAH
- 2.1.4 Nutrition assistance:
 - 1.2.1.4. Division of Agricultural Development (DAD) (via Farm Center)
- 2.1.5 Animal disaster response:
 - 1.2.1.5. DAH
 - 2.2.1.5. DARM
- 2.1.6 Protection of natural and cultural resources and historic resources:
 - 1.2.1.6. DARM
 - 2.2.1.6. DAD (via Farm Center)
 - 3.2.1.6. Division of Management Services (DMS)
- 2.1.7 Financial advising, counseling vouchers, and producer mediation and arbitration services:
 - 1.2.1.7. DAD (via Farm Center)
- 2.1.8 Soil and water conservation:
 - 1.2.1.8. DARM
 - 2.2.1.8. DMS

2.2. Organization

- 2.2.1 ESF 11 emergency operations will coordinate the resources of DATCP and other supporting agencies and organizations with the State Emergency Operations Center (SEOC) manager and SEOC general staff.
- 2.2.2 DATCP may request other resources from local, tribal, other state or federal agencies, and private organizations, as needed.
- 2.2.3 For food- and agriculture-related emergencies, DATCP coordinates with local, tribal, state, and federal responders, private business, and non-governmental organizations, and provides for implementation of state response plans, as appropriate.
- 2.2.4 The DNR:



- 1.2.2.4. Coordinates with local, tribal, state, and federal agencies for emergencies that may impact natural resources of the state, including threatened and endangered resources and species.
- 2.2.2.4. Has authority over wildlife management and carcass management.
- 2.2.5 The Wisconsin Historical Society maintains responsibility for the protection of cultural and historical resources of Wisconsin.
- 2.2.6 Depending on the type of emergency, support agencies may work autonomously in providing their services.

2.3. ESF Activities

The WERP Basic Plan defines standardized tasks that constitute the response responsibilities of any agency that serves a role in emergency management. This section defines those activities that are unique to ESF 11, and is intended to be used in conjunction with the common tasks outlined in the Basic Plan.

Table 2-2: Response Activities

Action Item	Agency
<p>Foreign animal and plant disease and pest infestation surveillance and response</p> <ul style="list-style-type: none"> • Implement the Foreign Animal Disease Response Plan or the Plant Industry Emergency Response Plan, as appropriate. • Use appropriate tools and authorities, including quarantine and movement permits for live animals and products, to contain or eradicate disease or infestation. • Issue advisories and protective action recommendations to the public, as necessary. 	<p>DATCP All</p>
<p>Agrichemical releases</p> <ul style="list-style-type: none"> • Deploy DATCP Toxic Response Team to investigate unexplained food-chain animal deaths. • Implement appropriate agrichemical resource management response plan. • Work with producers or agribusinesses as well as local and federal responders to support clean-up efforts. • Ensure that environmental issues are appropriately addressed. • Consult with state and local health officials about possible human health effects. 	<p>DATCP DNR WI DHS</p>
<p>Commercial food supply safety</p> <ul style="list-style-type: none"> • Implement the Wisconsin Food Defense Emergency Response Plan. • Manage the control and containment of a food-borne incident, including sample collection and analysis. • Issue advisories and protective action recommendations to the public, as necessary. • Coordinate responses among agencies, including local departments with responsibilities for inspecting food establishments. 	<p>DATCP WI DHS</p>



Wisconsin Emergency Response Plan
Agriculture & Natural Resources

ESF 11

Action Item	Agency
<p>Nutrition assistance</p> <ul style="list-style-type: none"> • Coordinate with ESF 6 for the acquisition, release, and distribution of emergency food supplies through: <ul style="list-style-type: none"> ○ USDA Foods (DPI and ARC) ○ The Emergency Food Assistance Program (WI DHS) ○ The FoodShare Program (WI DHS) ○ Voluntary organizations 	DATCP DPI ARC WI DHS DMA/WEM WI VOAD
<p>Animal disaster response</p> <ul style="list-style-type: none"> • Coordinate support to local and volunteer operations for animals affected by a disaster <ul style="list-style-type: none"> ○ Response <ul style="list-style-type: none"> ▪ <i>Assessment</i> ▪ <i>Search and rescue</i> ▪ <i>Collection of stray animals</i> ▪ <i>Evacuation and shelter, including tracking of evacuated household pets</i> ▪ <i>Zoo and sanctuary animal issues</i> ▪ <i>Veterinary medical care and assistance</i> ▪ <i>Human health risks</i> ○ Recovery <ul style="list-style-type: none"> ▪ <i>Reunification of animals and owners</i> ▪ <i>Placement of abandoned animals</i> ▪ <i>Disposal of animal carcasses</i> 	DATCP WisDOT DMA/WEM DNR WI DHS



3. Agency Responsibilities

3.1. Lead Agency – Department of Agriculture, Trade & Consumer Protection

Table 3-1: Lead Coordinating Agency Functions

Agency	Functions
<p>DATCP: Agency as a whole</p>	<ul style="list-style-type: none"> • Provide overall leadership, coordination, assessment, and technical assistance in response to: <ul style="list-style-type: none"> ○ Foreign animal and plant diseases and pest infestations ○ Animal disaster response ○ Land and water conservation issues ○ Agrichemical releases ○ Plant, food, milk, and dairy product contamination ○ Shortages of food supplies in large scale emergencies • Collect samples, forward to an appropriate laboratory, and review sample analysis reports. • Accumulate and assess contamination and disease information obtained from assessment teams, telecommunications industry, local emergency operations center, and other local, state, and federal agencies. • Coordinate and track the movements of incident-related resources to and from staging areas, including evacuation from and re-entry to an incident site. • Provide support agencies with current information concerning locations of disease or contamination outbreaks, extent of involvement, and available diagnostic information. • Provide information on local agricultural conditions, resources, and producers. • Through the DATCP Public Information Office (PIO) and in coordination with appropriate supporting agency PIOs: <ul style="list-style-type: none"> ○ Provide accurate, consistent, and timely information to the public. ○ Serve as a primary participant in a joint information center (JIC), if one is established. ○ Integrate information from federal counterparts. ○ Maintain contact with other states, through the Emergency Communications Plan developed by the Communication Officers of State Departments of Agriculture (COSDA). • Work with the Wisconsin Agro-Security Resource Network (WARN) as the main industry organization in an emergency. • Work with private industry in all agency response efforts, as appropriate, including ensuring adequate food supplies in large-scale emergencies.
<p>DATCP: Division of Animal Health</p>	<ul style="list-style-type: none"> • Investigate possible animal disease outbreaks. • Issue quarantine and movement control orders on affected livestock and premises. • Consult with stakeholders and partners on possible disease effects on livestock. • Provide technical advice for disposal of diseased animal carcasses to minimize spread of disease. • Deploy members of the Wisconsin Animal Response Corps, a Medical Reserve Corps unit established to respond to emergencies involving animals.



Agency	Functions
DATCP: Agrichemical Management Bureau	<ul style="list-style-type: none"> • Respond to agrichemical spills and oversee clean-up work. • Conduct investigations into food-chain animal deaths from unexplained causes to determine whether feed or agrichemical contamination has occurred. • Direct the deployment and operations of the Toxic Response Team.
DATCP: Land and Water Resources Management Program	<ul style="list-style-type: none"> • Provide engineering and technical assistance to counties and producers, as needed.
DATCP: Wisconsin Animal Response Corps	<ul style="list-style-type: none"> • Respond to local and state animal emergencies that exceed local or state capabilities, providing help with: <ul style="list-style-type: none"> ○ Animal care and treatment; vaccination ○ Rescue ○ Animal evacuation and sheltering ○ Animal mass casualty care ○ Specimen collection, decontamination, euthanasia, and necropsy ○ Other support activities

3.2. Wisconsin Governmental Support Agencies

Table 3-2: State Government Support Agencies Functions

Agency	Functions
Department of Health Services	<ul style="list-style-type: none"> • Provide overall leadership, coordination, assessment, and technical assistance for public health needs in the event of a disaster or emergency involving food and agriculture incidents. • Conduct human health risk assessments and provide health consultations for agrichemical emergencies and spills with human health implications. • Provide assistance and epidemiology services in dealing with zoonotic diseases (animal to people) and foodborne outbreaks linked to licensed food establishments and other facilities. • Provide nutrition assistance from the Emergency Food Assistance and FoodShare Programs. • Facilitate access to behavioral health support for survivors and emergency responders.
Department of Natural Resources	<p>For animal and plant diseases and pest infestations</p> <ul style="list-style-type: none"> • Provide containment and quarantine assistance to prevent the spread of foreign animal diseases to or through non-domesticated animals. • Provide assistance with vector control and location of cleaning and disinfecting stations. • Conduct surveillance on susceptible wild animal species, as appropriate. • Reduce infected wildlife populations, as appropriate. • Provide heavy equipment for disposal operations, as available. • Assist with the transportation of soil, carcasses or debris, as appropriate.
	<p>For agrichemical responses</p> <ul style="list-style-type: none"> • Provide technical and other assistance, as necessary.



Wisconsin Emergency Response Plan
Agriculture & Natural Resources

ESF 11

Agency	Functions
Department of Public Instruction	<ul style="list-style-type: none"> • Coordinate with the American Red Cross to release USDA foods in a federally-declared disaster: <ul style="list-style-type: none"> ○ For congregate feeding during a presidentially declared disaster, release USDA foods as long as available and needed. ○ For household feeding during a presidentially declared disaster, release USDA foods only with prior approval from the USDA and per extent and length of time as determined by the USDA. • Coordinate with the American Red Cross for release of USDA foods in the absence of a federal declaration, but when ESF 6 determines circumstances warrant USDA foods distribution (defined in accordance with 7 CFR 250.3 as <i>Situations of Distress</i>): <ul style="list-style-type: none"> ○ For congregate feeding during a situation of distress involving a natural event, release USDA foods to the extent that USDA foods and funds for replacement are available. Release of USDA foods to be a maximum of 30 days. ○ For congregate feeding during a situation of distress involving a non-natural event, release USDA foods to the extent that USDA foods and funds for replacement are available, with prior approval from USDA, and per extent and length of time as determined by USDA. • For household feeding during a situation of distress, release USDA foods only with prior approval from USDA and per extent and length of time as determined by USDA.
Department of Transportation: Traffic Management Center	<ul style="list-style-type: none"> • Provide guidance for re-routing of traffic in and around an affected area. • Identify traffic control issues and needs, including the establishment of movement corridors. • Identify potential sources of outside assistance (e.g., contractors, equipment, sources, etc.). • Provide additional traffic control devices for law enforcement to use in a quarantine area or detour.
University of Wisconsin-Extension	<ul style="list-style-type: none"> • Provide surveillance assistance in the response mission areas. • Provide laboratory services for animal and plant-related analytical needs. • Provide system wide resources (e.g. UW School of Veterinary Medicine, Cooperative Extension Service system and personnel) to assist in diagnosis of animal disease. • Provide and distribute information regarding the incident.
Department of Military Affairs: Wisconsin Emergency Management	<ul style="list-style-type: none"> • Identify sources of equipment and supplies, including communications equipment and mobile command centers • Assist in providing personal protective equipment (PPE) necessary to facilitate the movement, destruction, and disposal of contaminated products or populations of large animals. • Provide additional communications to responders, especially in remote areas of the state. • Identify the locations and organizations capable of approved decontamination of individuals and equipment. • Establish a JIC and coordinate with other agencies' public information officers, when needed. • Assist in and coordinate the transportation of suspected diseased tissue samples to an appropriate diagnostic laboratory.



Agency	Functions
Wisconsin Historical Society	<ul style="list-style-type: none"> • Identify previously undiscovered cultural and historic resources in an affected area. • Assist with appropriate treatment of inadvertent discovery of human remains through ground disturbing activities associated with clean up. • Advise on proper treatment options and strategies to avoid, minimize, or mitigate damage caused by disaster or post-disaster activities.
Department of Military Affairs: Wisconsin National Guard	<ul style="list-style-type: none"> • Provide containment and quarantine assistance to prevent the spread of plant and animal disease, as appropriate. • Provide incident security and traffic control, including management of approved entry to a site. • Provide additional support within the mission and capability of the WING.
Department of Transportation: Wisconsin State Patrol	<ul style="list-style-type: none"> • Provide incident security, including management of approved entry and exiting to a site, law enforcement, and traffic control, as appropriate. • Provide assistance implementing stop movement orders. • Provide containment and quarantine assistance to prevent the spread of foreign animal and plant diseases. • Provide security protection to responders and persons within the quarantine area. • Provide additional communications resources. • Coordinate the local, state, and federal law enforcement response, as appropriate. • Assist in the coordination and transportation of suspected diseased tissue samples to an appropriate diagnostic laboratory.

3.3. Non-Governmental Support Organizations

Table 3-3: Non-Governmental Support Organizations Functions

Agency	Functions
American Red Cross	<ul style="list-style-type: none"> • Coordinate sheltering operations with feeding operations at specified sites. • Identify and assess the requirements for food and distribution services on a two-phase basis: <ul style="list-style-type: none"> ○ Critical emergency needs immediately after the disaster ○ Longer-term sustained needs after the emergency is over • Coordinate the food distribution efforts of other volunteer organizations.
Wisconsin Agro-Security Resource Network	<ul style="list-style-type: none"> • Facilitate industry-wide awareness and response to an animal health emergency or crisis incident involving Wisconsin agriculture. • In concert with regulatory officials, quickly disseminate scientific, accurate information to media, producers and industry groups, and consumers.

3.4. Federal Government

Table 3-4: Federal Government Functions

Agency	Functions
--------	-----------



Wisconsin Emergency Response Plan
Agriculture & Natural Resources

ESF 11

<p>USDA: Animal Plant Health Inspection Services</p>	<ul style="list-style-type: none"> • Provide technical resources in the response mission area. • Provide laboratory assistance through the National Animal Health Laboratory Network (NAHLN). • Provide an “Emergency Declaration”, when necessary. • Provide indemnification, to include the cost of animals, and costs associated with an incident. • Collect, collate, analyze, and disseminate technical and logistical information. • Define training requirements for casual employees, volunteers, and support agencies involved in eradication operations. • Issue declaration of the disease and define the infected area and control zones. • Work with the JIC to prepare information for dissemination to the public, media, producers, processors, and transportation industry. • Allocate funding for compensation to the owner of destroyed animals. • Restrict payment of compensation in cases of violation. • Consult with state and local authorities regarding eradication operations.
<p>USDA: Food Safety and Inspection Services</p>	<ul style="list-style-type: none"> • Control products suspected to be adulterated. • Issue plant closures. • Conduct food borne disease surveillance and field investigations.
<p>USDA: Food Nutrition Services</p>	<ul style="list-style-type: none"> • Coordinate the determination of nutrition assistance needs. • Obtain appropriate food supplies. • Arrange for delivery of supplies. • Authorize disaster food stamps. • Coordinate with states to release their USDA foods supplies to feed people at shelters and mass feeding sites or to distribute USDA foods to households, as appropriate. • Coordinate the replenishing of a state’s USDA foods supplies from other states or from USDA foods inventories, when necessary. • Seek authorization from the Secretary of Agriculture for special funding to buy or replenish USDA foods stocks.
<p>USDA: Farm Service Agency</p>	<ul style="list-style-type: none"> • Administer the State Emergency Board, which works with Wisconsin Emergency Management requesting county disaster declarations. • Administer assistance programs to producers when an emergency or disaster declaration is made, including disaster assistance program and farm loan programs.
<p>United States Department of Health & Human Services: Indian Health Service</p>	<ul style="list-style-type: none"> • Support coordination with tribal health authorities.
<p>United States Department of the Interior: Agency as a whole</p>	<ul style="list-style-type: none"> • Conduct resource assessments. • Provide the response resources of the National Interagency Fire Center (e.g., incident management teams, communications equipment, etc.).
<p>United States Food and Drug Administration: Agency as a whole</p>	<ul style="list-style-type: none"> • Provide technical assistance in the response mission area. • Provide laboratory assistance through the Food Emergency Response Network (FERN).



4. Supporting Documents

4.1. Attachments

4.1.1 Animal Disaster Response

4.2. Memoranda of Understanding

4.2.1 Department of Health Services/Division of Public Health

4.2.2 Letter of Understanding between Department of Public Instruction and American Red Cross Badger and South Central Wisconsin Region

4.3. Agency-Specific Plans and Procedures

4.3.1 Agrichemical Spill Response and Management Plan

4.3.2 Emergency Communications Plan, developed by the Communication Officers of State Departments of Agriculture (COSDA)

4.3.3 Food Safety Response Plan

4.3.4 Foreign Animal Disease Response Plan

4.3.5 Plant Industry Emergency Response Plan

4.4. Federal Response

4.4.1 National Response Framework, Third Edition, June 2016

4.4.2 Emergency Support Function #11 – Agriculture and Natural Resources Annex, June 2016



Wisconsin Emergency Response Plan
Agriculture & Natural Resources

ESF 11

Table 4-1: Record of Change

#	Date	Agency/Individual	Change
1.			
2.			
3.			
4.			
5.			
6.			
7.			
8.			
9.			
10.			
11.			
12.			
13.			
14.			
15.			
16.			
17.			
18.			



Intentionally left blank



Attachment 1

Animal Disaster Response Plan

***Animal Disaster Response
Plan***



Wisconsin Emergency Response Plan
Animal Disaster Response Plan

ESF 11
Attachment 1

Intentionally left blank



Table of Contents

1. Introduction	5
1.1. Purpose.....	5
1.2. Scope.....	5
1.3. Definitions	6
1.4. Policies.....	7
2. Concept of Operations	8
2.1. Mobilization	8
2.2. Organization.....	9
2.3. ESF Activities.....	10
3. Agency Responsibilities	12
3.1. Lead Coordinating Agency – Department of Agriculture, Trade & Consumer Protection...12	
3.2. Wisconsin Governmental Support Agencies.....	12
3.3. Non-Governmental Support Organizations	13
3.4. Federal Support Agencies	13
4. Supporting Documents	13
4.1. Federal Legislation	13

List of Tables

Table 1-1: Coordinating and Support Agencies.....	5
Table 2-2: Response Activities.....	10
Table 2-3: Short Term Recovery Activities.....	11
Table 3-1: Lead Coordinating Agency Functions.....	12
Table 3-2: State Government Support Agencies Functions.....	12
Table 3-3: Non-Governmental Support Organizations Functions.....	13
Table 3-4: Federal Support Agencies Functions.....	13
Table 4-1: Record of Change	14

List of Figures

Figure 1: Animal Disaster Response ICS Organization.....	Error! Bookmark not defined.
--	-------------------------------------



Wisconsin Emergency Response Plan
Animal Disaster Response Plan

ESF 11
Attachment 1

Intentionally left blank



Table 1-1: Coordinating and Support Agencies

Lead Coordinating Agency	Department of Agriculture, Trade and Consumer Protection (DATCP)
Wisconsin Governmental Support Agencies	Department of Children and Families (DCF) Department of Health Services (WI DHS) Department of Natural Resources (DNR) University of Wisconsin Extension (UW-Extension)
Non-Governmental Support Organizations	Adventist Community Services (ACS) American Red Cross (ARC) American Veterinary Medical Association Veterinary Medical Assistance Teams (AVMA VMAT) National Animal Rescue & Sheltering Coalition (NARSC) DATCP Wisconsin Animal Response Corps (WARC) Wisconsin Veterinary Medical Association (WVMA)
Federal Coordinating Agency	Federal Emergency Management Agency (FEMA)
Federal Supporting Agencies	U.S. Department of Health & Human Services (HHS) HHS National Veterinary Response Teams (NVRT) U.S. Department of Agriculture (USDA)/Animal Plant Health Inspection Services (APHIS), Veterinary Services USDA/APHIS, Animal Care USDA/APHIS, Wildlife Services

1. Introduction

1.1. Purpose

To coordinate agencies and organizations in supporting local and volunteer response and recovery operations for animals affected by a natural, technological, or human-caused disaster when local capabilities are overwhelmed.

1.2. Scope

1.2.1. Response

- 1.2.1.1. Assessment
- 1.2.1.2. Control and eradication or control foreign animal disease
- 1.2.1.3. Search and rescue
- 1.2.1.4. Collection of stray animals
- 1.2.1.5. Evacuation and shelter (including tracking) of evacuated household pets
- 1.2.1.6. Zoo and sanctuary animal issues
- 1.2.1.7. Veterinary medical care and assistance
- 1.2.1.8. Human health risks
- 1.2.1.9. Coordinate public information for response activities



1.2.2. Short-Term Recovery

- 1.2.2.1. Reunification of animals and owners
- 1.2.2.2. Placement of abandoned animals
- 1.2.2.3. Disposal of animal carcasses

1.3. Definitions

1.3.1. Household pet

A domesticated dog, cat, bird, rabbit, rodent, or turtle that:

- 1.3.1.1. Is traditionally kept in the home for pleasure rather than for commercial purposes.
- 1.3.1.2. Can travel in commercial carriers.
- 1.3.1.3. Can be housed in temporary facilities.
- 1.3.1.4. Does not include reptiles (except turtles), amphibians, fish, insects, arachnids, farm animals (including horses), or animals kept for racing purposes.

1.3.2. Service animal

- 1.3.2.1. The American with Disabilities Act of 1990 (ADA), as amended, defines a service animal as a dog of any breed or size, or a miniature horse that is individually trained to do work or perform tasks for an individual with a disability.
- 1.3.2.2. Wisconsin state law expands this definition to include guide dog, signal dog, or other animal that is individually trained or is being trained to do work or perform tasks for the benefit of a person with a disability, including:
 - (1) The work or task of guiding a person with impaired vision
 - (2) Alerting a person with impaired hearing to intruders or sound
 - (3) Providing minimal protection or rescue work
 - (4) Pulling a wheelchair
 - (5) Fetching dropped items
- 1.3.2.3. The crime deterrent effects of an animal's presence and the provision of emotional support, well-being, comfort, or companionship do not constitute work or tasks for the purposes of these definitions.
- 1.3.2.4. Qualified disabilities include physical, sensory, psychiatric, or other mental disability.
- 1.3.2.5. Service animals must be allowed entry into the shelter when the prospective shelter resident with a disability reports to staff that "this is my service (assistance or disability) animal".



1.3.2.6. Where a county or tribe has not adopted an expanded definition of service animal, apply the reasonable modification policy if an individual with a disability presents with an alternate species of service animal.

1.3.3. Livestock

Those domesticated species of animals used for human food or fiber or those species of animals used for service to humans, including:

1.3.3.1. Bovine animals

1.3.3.2. Equine animals

1.3.3.3. Goats

1.3.3.4. Poultry

1.3.3.5. Sheep

1.3.3.6. Swine other than wild or feral swine

1.3.3.7. Farm-raised deer

1.3.3.8. Farm-raised game birds

1.3.3.9. Camelids (e.g., llamas, alpacas, and camels)

1.3.3.10. Ratites (e.g., ostriches or emu)

1.3.3.11. Farm-raised fish

1.3.4. Exotic animal

An animal non-native to Wisconsin.

1.3.5. Any animal:

1.3.5.1. Of a feral nature

1.3.5.2. normally found in the wild in Wisconsin

1.3.5.3. not a domestic animal native to Wisconsin

1.3.6. Captive wildlife

Native or non-native undomesticated animal held in a controlled environment designed to prevent the departure of wildlife from the controlled environment.

1.4. Policies

1.4.1. The Pets Evacuation and Transportation Standards Act of 2006 amends the Robert T. Stafford Disaster Relief and Emergency Assistance Act to ensure that state and local emergency preparedness operational plans address the needs of individuals with household pets and service animals following a major disaster.



- 1.4.2. Under the Americans with Disabilities Act (ADA):
 - 1.4.2.1. Individuals with disabilities must be permitted to be accompanied by their service animals in all areas of a place of public accommodation where members of the public, program participants, clients, customers, patrons, or invitees are allowed to go.
 - 1.4.2.2. Service animals must be allowed entry into the shelter when the prospective shelter resident with a disability reports to staff that "this is my service (assistance or disability) animal".
- 1.4.3. There is no statutory authority in Wisconsin to forcibly evacuate persons and their pets from their residences, but once evacuated, authorities may restrict re-entry to specific hazardous areas. Residents who refuse to evacuate should be informed that:
 - 1.4.3.1. Future opportunities to evacuate may not exist.
 - 1.4.3.2. Emergency response services within the evacuated area may become unavailable.
 - 1.4.3.3. Return to the evacuated area may be restricted or prohibited.
- 1.4.4. Department of Military Affairs/Wisconsin Emergency Management (DMA/WEM) provides guidance in the reception and management of service animals in emergency shelters.
- 1.4.5. The State of Wisconsin does not provide shelter for displaced captive wildlife. Owners of captive wildlife facilities should develop their own emergency plans.
- 1.4.6. WEM endorses the National Mass Evacuation Tracking System (NMETS) as the system of choice for tracking evacuated residents, their pets, and their belongings.

2. Concept of Operations

2.1. Mobilization

- 2.1.1. Initial awareness of the need for local animal disaster response support generally originates from one of the following sources:
 - 2.1.1.1. Local responders, Emergency Support Function (ESF) 11 personnel, or emergency management who notify:
 - (1) WEM Duty Officer (DO), who contacts:
 - (2) DATCP Division of Animal Health (DATCP/DAH), State Veterinarian's Office.
 - 2.1.1.2. Situational awareness in the event the SEOC is at Level 3 or higher, which may drive mobilization considerations in advance of a local request for support.
- 2.1.2. Upon notification, the State Veterinarian's Office:
 - 2.1.2.1. Completes an assessment to identify thresholds for action.



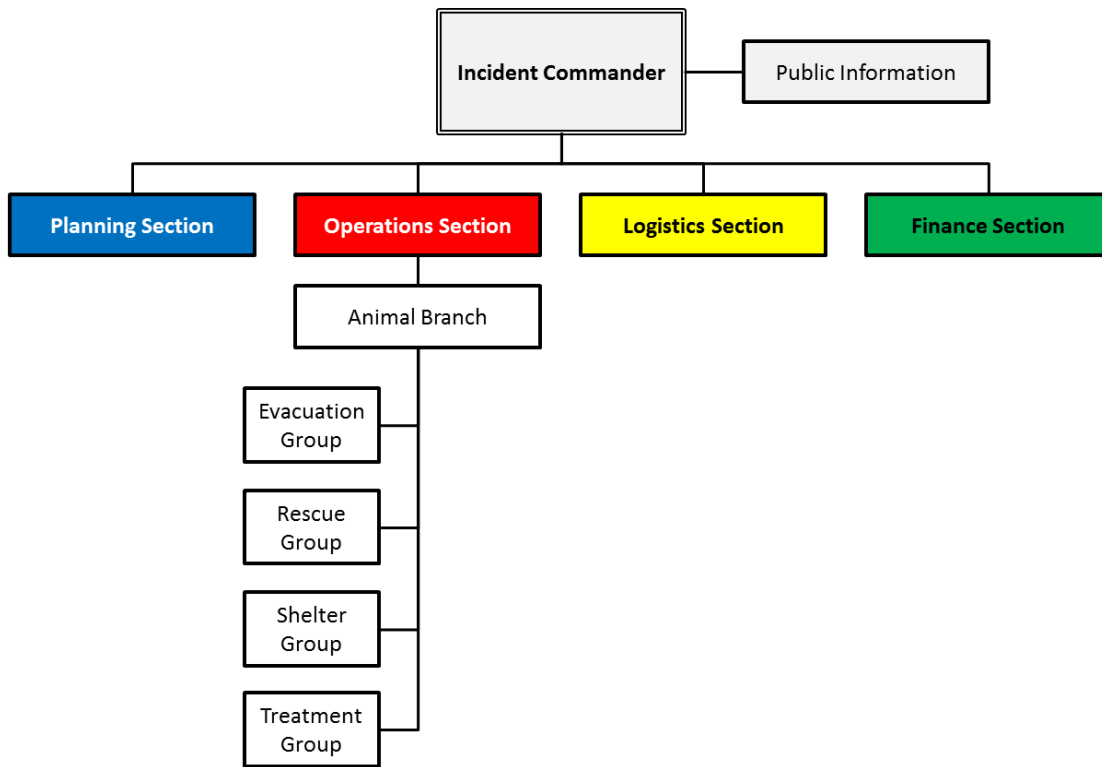
- 2.1.2.2. May mobilize one or more of the following:
 - (1) Wisconsin Animal Reserve Core (WARC) team(s)
 - (2) DATCP Incident Management Team
 - (3) AVMA Veterinary Medicine Assistance Team(s)
 - (4) NARSC Support
 - (5) Emergency Management Assistance Compact (EMAC) support
- 2.1.2.3. May activate the Agency Coordination Center (ACC).
- 2.1.2.4. May consider hotline mobilization.

2.2. Organization

- 2.2.1. County animal disaster response authorities, in coordination with the county emergency management plan and the EOC Incident Command System (ICS), retain operational authority of ESF 11-related response and recovery.
- 2.2.2. DAH State Veterinarian's Office, coordinates the Animal Disaster Response Plan via ESF 11 through the Human Services Branch of the Operations Section at the SEOC (See Figure 1: Animal Disaster Response ICS Organization).
 - 2.2.2.1. Provides support, technical assistance, and coordination assistance to the local and regional emergency animal disaster response.
 - 2.2.2.2. Alerts supporting state agencies, as needed.
 - 2.2.2.3. Generates lists of appropriate credentialed animal health care providers from relevant registries, as needed.
 - 2.2.2.4. Initiates the formation of a needs assessment team in the early stages of the response to:
 - (1) Anticipate, project, categorize, and quantify response and recovery needs of displaced animals.
 - (2) Coordinate with the Planning Section and ESF 7 in developing and maintaining situational awareness of the need for and status of volunteer and donations management operations.
 - (3) Coordinate with ESF 14 to identify and address unmet needs.
 - 2.2.2.5. Assists county staff in obtaining emergency federal aid.
- 2.2.3. All federal assistance for animal care must be requested by DATCP and must be coordinated through the Animal Disaster Response Plan.
- 2.2.4. The field response organization to a disaster affecting animals would likely resemble the following chart.



Figure 2-1: Animal Disaster Response ICS Organization



2.3. ESF Activities

The Wisconsin Emergency Response Plan (WERP) Basic Plan defines standardized tasks that constitute the response responsibilities of any agency that serves a role in emergency management. The following defines those responsibilities that are unique to ESF 11 and is intended to be used in conjunction with the common tasks outlined in the Basic Plan and with specific duties assigned in the other ESFs.

Table 2-1: Response Activities

Action Item	Agency
<ul style="list-style-type: none"> Through the incident command system, maintain situational awareness of all animal shelter facilities and confinement areas. 	DATCP WI DHS DCF DMA/WEM
<ul style="list-style-type: none"> Coordinate with ESF 15 to inform the public about animal-related disaster operations, including: <ul style="list-style-type: none"> Evacuation options and responsibilities of animal owners. Recovery actions for domestic animals. How to report animal needs and incidents observed in the community. Donations needed by responding organizations. 	DATCP DMA/WEM ACS



Action Item	Agency
<ul style="list-style-type: none"> • When feasible, assist counties in identifying suitable just-in-time facilities for shelters and confinement areas. • Assess the need for and coordinate the acquisition of field support personnel and resources. • Provide guidance regarding animal health and welfare issues. 	DATCP
<ul style="list-style-type: none"> • Coordinate the animal medical services needed for animal shelter and confinement as well as decontamination areas with support agencies. 	DATCP WI DHS VMAT
<ul style="list-style-type: none"> • Coordinate identification and management of storage sites and staging areas for animal food and medical supplies. 	DATCP DMA/WEM ACS NARSC
<ul style="list-style-type: none"> • Coordinate with ESF 7 to acquire volunteer and donations support. 	DATCP DMA/WEM WI DHS ACS

ESF 11 short term recovery activities should be initiated at the earliest opportunity. They are likely to overlap with response activities before fully transitioning to recovery activities.

Table 2-2: Short Term Recovery Activities

Action Item	Agency
<ul style="list-style-type: none"> • Coordinate short term recovery activities with ESF 14 Short-Term Community Recovery and Mitigation. • Facilitate transition from response activities to recovery activities and the State of Wisconsin Recovery Plan, as needed. 	DATCP DMA/WEM
<ul style="list-style-type: none"> • Coordinate animal-related damage assessment through the counties. 	DATCP UW-Extension DMA/WEM VMAT
<ul style="list-style-type: none"> • Coordinate with ESF 1, ESF 3, and ESF 8 for the removal and proper disposal of animal waste and dead animals. 	DATCP DNR DMA/WEM WI DHS
<ul style="list-style-type: none"> • Provide support for reunification of sheltered evacuees with their service animals and household pets. 	DATCP WI DHS DCF American Red Cross Local
<ul style="list-style-type: none"> • Provide support for long-term maintenance, placement, or disposition of animals that cannot be returned to their normal habitat or their owners. 	DATCP Local
<ul style="list-style-type: none"> • Provide support for documentation of animal treatments, injuries, losses, and other impacts. 	DATCP UW-Extension AVMA NARSC



Action Item	Agency
<ul style="list-style-type: none"> • Provide guidance for reimbursement of disaster-related costs. 	DATCP DMA/WEM Local

3. Agency Responsibilities

3.1. Lead Coordinating Agency – Department of Agriculture, Trade & Consumer Protection

Table 3-1: Lead Coordinating Agency Functions

Agency	Functions
Department of Agriculture, Trade & Consumer Protection: Division of Animal Health - State Veterinarian's Office	<ul style="list-style-type: none"> • Ensure the availability of resources for the disaster. <ul style="list-style-type: none"> ○ Coordinate and provide information on the availability of resources from other states, the federal government, and non-governmental organizations. • Assist local disaster coordination with training and preparation of animal disaster responders. • Support carcass disposal operations.
Department of Agriculture, Trade & Consumer Protection: Wisconsin Animal Response Corps	<ul style="list-style-type: none"> • Provide response support.

3.2. Wisconsin Governmental Support Agencies

Table 3-2: State Government Support Agencies Functions

Agency	Functions
Department of Children & Families	<ul style="list-style-type: none"> • Provide support in ensuring ESF 6 operations are well coordinated with the Animal Disaster Response Plan.
Department of Health Services	<ul style="list-style-type: none"> • Provide support in ensuring ESF 6 operations are well coordinated with the Animal Disaster Response Plan. • Provide support in decontaminating animals. • Provide support in diagnosing, preventing, and controlling zoonotic diseases (e.g. rabies) and other animal-related conditions of public health significance.
Department of Natural Resources	<ul style="list-style-type: none"> • Support carcass disposal operations. • Conduct assessment of lost or escaped captive wildlife.
University of Wisconsin-Extension	<ul style="list-style-type: none"> • Identify and educate commercial and non-commercial animal owners on animal emergency safety and animal emergency needs for food, water, power, etc. • Assist in animal-related damage assessment.



3.3. Non-Governmental Support Organizations

Table 3-3: Non-Governmental Support Organizations Functions

Agency	Functions
Adventist Community Services	<ul style="list-style-type: none"> • Provide coordination and support for donations management of animal-related resources.
American Red Cross	<ul style="list-style-type: none"> • Provide support in ensuring ESF 6 operations are well coordinated with the Animal Disaster Response Plan.
American Veterinary Medical Association	<ul style="list-style-type: none"> • Provide early damage assessment personnel to assist in determining what resources may be needed from outside the state. • Provide basic volunteer treatment teams to augment local capabilities.
National Animal Rescue & Sheltering Coalition	<ul style="list-style-type: none"> • Provide a single NARSC point of contact to incident command. • Through NARSC member agencies, provide technical assistance and coordination for assessment, logistical support, shelter, evacuation, transportation, rescue, sheltering, and reunification of animals.
Wisconsin Veterinary Medical Association	<ul style="list-style-type: none"> • Provide education and outreach to volunteer veterinarians and technicians to assist in animal disaster response and recovery.

3.4. Federal Support Agencies

Table 3-4: Federal Support Agencies Functions

Agency	Functions
Federal Emergency Management Agency:	<ul style="list-style-type: none"> • Provide multi-agency coordination and support.
United States Department of Health & Human Services: National Veterinary Response Teams	<ul style="list-style-type: none"> • Provide infrastructure assessment. • Provide support for sheltered, working, and laboratory animals. • Provide primary care for large and small animals. • Request regional emergency coordinators through ESF 8.
United States Department of Agriculture: Animal Plant Health Inspection Services	<p>Animal Care</p> <ul style="list-style-type: none"> • Provide coordination for disaster animal response and sheltering, in coordination with FEMA. <p>Veterinary Services</p> <ul style="list-style-type: none"> • Provide technical assistance and support, as requested and appropriate. <p>Wildlife Services</p> <ul style="list-style-type: none"> • Provide technical assistance and support as appropriate related to capture or depopulation of wild or captive wild animals.

4. Supporting Documents

4.1. Federal Legislation

4.1.1. Americans with Disabilities Act of 1990, as amended

4.1.2. Pets Evacuation and Transportation Standards Act



Wisconsin Emergency Response Plan
Animal Disaster Response Plan

ESF 11
Attachment 1

Table 4-1: Record of Change

#	Date	Agency/Individual	Change
1.			
2.			
3.			
4.			
5.			
6.			
7.			
8.			
9.			
10.			
11.			
12.			
13.			
14.			
15.			
16.			
17.			
18.			